



ROUTE MAP VSO

Herculesplein 8, 3584 AA Utrecht
Phone: +31 (0)30 – 23 20 600

Public transport:

There is a direct and regular connection to the VSO's office: buses leave frequently from Utrecht Central Station and take approximately 10-15 minutes.

You can catch:

City buses:

- bus 12 direction *De Uithof UMC AZU*
- bus 12s direction *De Uithof UMC AZU*
- bus 13 direction *Stadion Galgenwaard*

Regional buses:

- bus 241 direction *Wijk bij Duurstede*
- bus 41 direction *Wijk bij Duurstede*

Alight at *stadion Galgenwaard*. From here the walking distance to our office is approximately 2 minutes. Alight from the bus and walk back in the direction you came from. You will see a tall white building with the word '*Conclusion*' written in red letters at the top of it. This is where we are on the first floor. The main entrance is located on the left handside of the building.

Own transport:

When using a navigation device, please enter the address without the house number.

From Amsterdam/`s Hertogenbosch (A2)

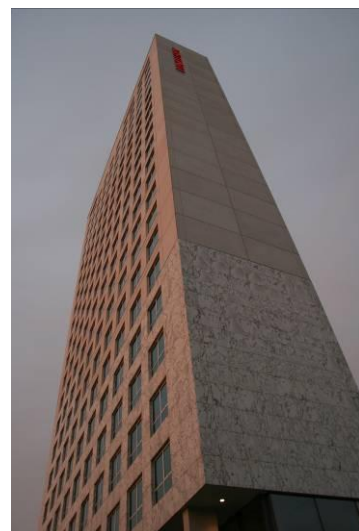
Follow the A2 to the Oudenrijn intersection. Then follow the signs A12 Arnhem/Ring Zuid. Take the exit Lunetten-Houten. Leave the roundabout heading in the direction Lunetten. Follow the Waterlinieweg. Take the exit Stadion (Galgenwaard). At the end of the sliproad turn right into the underground parking garage.

From Arnhem (A12)

At the Lunetten intersection head towards Utrecht/Nieuwegein. Follow the signs Utrecht-Oost/Rijnsweerd/Lunetten. At the roundabout take the right filter lane towards Utrecht-oost/Galgenwaard. Follow the Waterlinieweg. Take the exit Stadion (Galgenwaard). At the end of the sliproad turn right into the underground parking garage.

From Breda (A27)

Follow the A27 to the Lunetten intersection. Take the exit Centrum/Jaarbeurs (A12), after the bend join the A12, immediately after the bend joining the A12 take the exit Lunetten/Galgenwaard (exit 18). At the roundabout take the right filter lane towards Utrecht-oost/Galgenwaard. Follow the Waterlinieweg. Take the exit Stadion (Galgenwaard). At the



end of the sliproad turn right into the underground parking garage.

From The Hague/Rotterdam (A12)

Follow the A12 towards Utrecht. Then follow the signs Arnhem / Ring Zuid. Take the exit Lunetten-Houten (exit 18). At the roundabout take the right filter lane towards Utrecht-oost/Galgenwaard. Follow the Waterlinieweg. Take the exit Stadion (Galgenwaard). At the end of the sliproad turn right into the underground parking garage.

From Hilversum/Amersfoort (A27)

At the Rijnsweerd intersection follow the signs to Utrecht-centrum. Turn left at the traffic lights towards the city centre. Take the first exit (Galgenwaard), turn left at the lights. Drive under the viaduct, keeping in the righthand lane. Turn right at the traffic lights (petrol station). Go straight ahead towards the white building *Conclusion*. You can park in the underground parking garage.

Parking:

The complex *Galgenwaard* has the capacity for 800 paid parking places at Q-Park. The car park is open 24 hours per day. You can pay by credit card, chip knip or cash.

VSO is situated on the first floor.

